

**Synchronised selection for...**



**fleece weight, body weight, fertility  
& fibre diameter**

**Buyers please bring your PIC details.**

**RAM SALE CATALOGUE**  
**Thursday 6th October 2011**

**bankwest**



**Need a bank that  
understands  
your business?**

BankWest supports the local community and is dedicated to addressing local finance needs, specialising in:

- **Agribusiness lending**
- **Commercial lending;**
- **Home Loans**
- **Equipment finance; and**
- **Investment opportunities**

If your business deserves personal attention,  
then call the local team at:

**BankWest Dubbo**

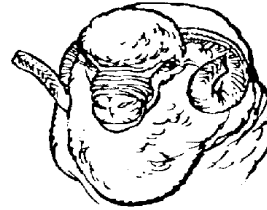
Suite 1, 10-12 Cobra Street  
Dubbo NSW 2830

**Phone (02) 6882 4527**

[www.bankwest.com.au](http://www.bankwest.com.au)

**Nick Pobje, Dick Russell, Bob Isenbert**

Bank of Western Australia Ltd. ABN 22 050 494 454 afsl 236 872



## **HELMSMAN AUCTION SALE OF RAMS**

**At "Sunnyside", Armatree.**

**Thursday 6th October 2011  
Commencing at 1.30pm**

**30 SELECTED 2 TOOTH RAMS**

**Pens 1 to 30**

**Timetable**

**9am . . . . . Register for Field Day**  
**9.30 to 12.30pm . . . . . Speakers**  
**12.30pm . . . . . Lunch**  
**1.30pm . . . . . Auction of 30 rams**

**Auctioneer – Steve Colwell  
of Halcroft and Bennett  
Gulargambone**

**Phone: 02 6825 1055    Mob: 0428 480 117**

# **HELMSMAN AUCTION**

---

This method of buying rams combines the good features of both the auction system and sale by private treaty. You get the opportunity to bid on and buy any ram in the offering and you pay competitive market value without any pressure.

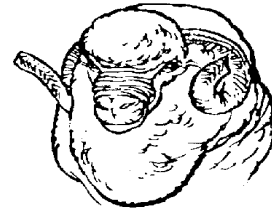
## **HOW IT WORKS**

- On arrival, the intending purchasers register at the bid table and receive a buyer number. All rams are displayed for inspection as usual, with relevant information provided in the catalogue. When the sale commences, all rams are on the market simultaneously. You may bid on any ram, regardless of lot number, by filling a card and handing it to a 'runner'.
- You may open the bidding according to the opening pen price as displayed and further bids in multiples of \$50 will be accepted. There is no upper limit on the size of bid.
- Bids are recorded with the buyers number on a large board adjacent to the ram display area. You can bid on any number of rams at once and can see at a glance whether your bid still stands or has been overbid.
- There is no pressure to commit yourself to another bid. If your first choice ram goes over the limit you can still bid on all other rams in the sale.

- A bid once submitted and recorded cannot be retracted and the person responsible for submitting such a bid will be responsible for it until it is overbid.
- The sale will remain open for a minimum of one hour. A bid registered in the last three minutes will result in a three minute time extension.
- Further bids would trigger the same process until no more bids are received in a specified period, which would signify the end of the sale. (Note that the bidding interval may remain at three minutes throughout or may be shortened progressively to help conclude the sale).

## THE BENEFITS

1. You have more time to consider lodging a bid. You can place genuine bids on any ram of your choice at any time during the sale period.
2. You have the opportunity to re-assess each lot during the sale period without any pressure to make an instant decision.
3. You have the opportunity to take home the rams you want, irrespective of lot order. For example, having been out-bid on lot 26, your first choice, you can move back to your second choice ram earlier in the catalogue, for example lot 7.
4. When you are buying multiples or groups of rams, Helmsman gives you flexibility and time to average your purchase costs.



Registered Merino Stud, Flock Number 3884.  
Member of Sheep Genetics. Accredited Brucellosis Free.

## IMPORTANT INFORMATION ABOUT THE RAMS ON OFFER

1. Consistent with the GRASS Merino policy of producing profitable sheep for commercial woolgrowers, no sheep on exhibition or for sale has been hand fed or housed during its lifetime.
2. All catalogued rams have orange ear tags in GRASS index order. For an explanation of the GRASS index see page 19 and 20.
3. All catalogued rams have passed a veterinary examination for physical soundness. See veterinarian's letter.
4. Rams for sale are June / July 2010 drop.
5. The 2010 drop were lamb shorn on 21.10.10 and fleece assessment was on 19.04.11 at 10.7 months of age with 5.9 months wool growth.
6. Rams fleece weighed – 19 April 2011.
7. Rams body weighed – 23 May and 13 September 2011.

### Flock averages – whole drop 342 rams

Greasy fleece weight (no belly wool)	= 3.2kg (10.7 m of age and 5.9 mths wool)
Yield %	= 69.6% (5.9 months wool)
Clean fleece weight	= 2.2 kg (10.7 m of age and 5.9 mths wool)
Fibre diameter	= 19.2 $\mu$ m (10.7 months of age)
Body weight	= 72.6 kg (15.5 months of age)

## How to use the performance information provided

Performance information for each of the rams being sold is shown on the following pages in small tables. An example table is shown below and its contents explained.

<b>Pen 1</b>	<b>Large Tag/Rank: 8</b>		Small tag: 10-1920		<b>Horn - Twin</b>	
Trait	CFW %	FD $\mu$ m	CV %	WT kg	GRASS DP4% Index	
<b>ASBVs</b>	<b>11.1</b>	<b>0.6</b>	<b>-2.0</b>	<b>17.4</b>	<b>130.1</b>	
<i>10 drop av.</i>	16.3	-0.9	0.5	3.3	133.8	
Measured value	CFW %	FD $\mu$ m	CV %	FCF %	WT kg	SC mm
	<b>131.9</b>	<b>20.4</b>	<b>16.7</b>	<b>99.7</b>	<b>74.5</b>	<b>34</b>
Comment:						
Reserve price: \$900					\$	

### Each ram's performance table has four sections

#### Section 1. Pedigree

**Pen:** sale pen number. **Large tag/Rank:** this tag number is the ram's index rank.

**Small tag:** Year of drop and measurement tag number. Poll/scanned twin or single.

#### Section 2. Australian Sheep Breeding Values (ASBVs).

**Traits:** The abbreviations of the traits reported as breeding values in the catalogue.

The traits and abbreviations are shown in the table at the bottom of the page.

**ASBVs:** The ram's yearling breeding values and GRASS index value (see page 19).

**current drop av:** The average ASBVs and index of current drop GRASS rams.

#### Section 3. The current drop ram's measured performance values.

The ram current drop trait average performances and the age and wool at the time of evaluation of each trait are shown in the table on the following page.

CFW is a percentage deviation from the drop average where the average is 100.

#### Section 4. Space for comment and reserve price

### What are "Australian Sheep Breeding Values" (ASBVs)?

ASBVs are Australian across-flock breeding values. They describe the expected gain in performance of the ram's progeny when mated to similar performing ewes. ASBVs are expressed relative to the average of Merino ram breeding flocks. To help you relate this standard to the GRASS rams the following table allows you to benchmark the ASBVs.

Trait:	Yearling (Y) age	GRASS adult flock ewe performance	GRASS 2010 drop rams ASBV average
<b>CFW</b> .....Clean fleece weight .....	4.3 kg .....	16.3	
<b>FD</b> .....Fibre diameter .....	19.8 $\mu$ m .....	-0.9	
<b>CV</b> .....CV of fibre diameter .....	20.7% .....	0.5	
<b>WT</b> .....Body weight .....	52.0 kg .....	3.3	
<b>Index</b> .....	GRASS DP 4% MP .....	133.8	

## How can you use ASBVs to make your ram selections?

ASBVs will increase your accuracy of selection and as a result the rate at which your flock improves will increase. But how can you use ASBV to meet your objective? To show how let us look at an example:

**Objective:** A GRASS blood commercial flock (or a flock that has a similar genetic performance) that has a breeding objective to give a high emphasis on increasing fleece weight and moderate emphasis to improve growth rate and small reduction in fibre diameter.

### Selection strategy:

- rams with high index value will have higher performance relative to the flock's objective,
- review the ASBV to ensure their balance is right for the flock objective,
- evaluate the visually assessed traits relative to the flock's objective,
- combine the performance for measured traits and visually assessed traits,
- based on the overall standard grade each ram relative to your flock objective.

For this example objective grade rams higher when they are:

- heavy cutting (where possible above the average ASBV - average is 16.3),
- have good body weight (where possible are above average ASBV – average is 3.3), and
- able to maintain or improve fibre diameter (finer or about average ASBV – average is -0.9).

### GRASS Dual Purpose 4% Micron Premium index

The GRASS Dual Purpose 4% Micron Premium (DP 4% MP) index shown in this catalogue can be used to aid selection in this example because it matches the example breeding objective. It can be used to aid selection because it is a good summary of the value of the ram for all the measured traits – the larger the index value the higher the ram's performance and the faster the rate of progress in the flock.

### Other indexes shown on the sale pen cards

Make sure the index you use matches **your breeding objective for your flock**.

**DP 7%:** High emphasis on WT and Lambing %, moderate equal emphasis on FW and FD.

**M 7%:** Moderate and equal emphasis on FW and FD and maintain emphasis on other traits.

### Reproductive soundness

Rams have recently been checked for reproductive soundness. You can make your selections with confidence.

### GRASS 2010 ram drop's average measured performance and age

Trait:	2010 drop rams average performance	Age* of drop at
evaluation		
<b>CFW</b> ..... Clean fleece weight .....	4.5 kg .....	10.7 months
<b>FD</b> ..... Fibre diameter .....	19.2 µm .....	10.7 months
<b>CV</b> ..... CV of FD .....	17.8% .....	10.7 months
<b>FCF</b> ..... Comfort factor .....	99.5% .....	10.7 months
<b>WT</b> ..... Body weight .....	72.6 kg .....	15.5 months
<b>SC</b> ..... Scrotal circumference .....	34.4 cm .....	15.5 months
<b>Scan</b> ..... Twin or Single .....	75.6% Twins.....	Preg. Scanning

\* CFW adjusted to a 12 month estimate, all fleece traits measured in 5.9 months wool growth.

**GRASS 2010 drop auction sale rams - ASBV and measured performance**

<b>Pen 1</b>	<b>Large Tag/Rank: 16</b>		Small tag: 10-2078		<b>Horn/Twin</b>	
Trait	CFW %	FD $\mu$ m	CV %	WT kg	GRASS DP4% index	
<b>ASBVs</b>	<b>19.9</b>	<b>-1.9</b>	<b>2.6</b>	<b>7.7</b>	<b>147.9</b>	
<i>10 drop av.</i>	16.3	-0.9	0.5	3.3	133.8	
Measured value	CFW %	FD $\mu$ m	CV %	FCF %	WT kg	SC mm
	<b>110.5</b>	<b>18.3</b>	<b>22.5</b>	<b>99.2</b>	<b>83.0</b>	<b>36</b>
Comment:						
Reserve price: \$900					\$	

<b>Pen 2</b>	<b>Large Tag/Rank: 97</b>		Small tag: 10-2095		<b>Horn/Twin</b>	
Trait	CFW %	FD $\mu$ m	CV %	WT kg	GRASS DP4% index	
<b>ASBVs</b>	<b>13.6</b>	<b>-0.9</b>	<b>1.8</b>	<b>5.8</b>	<b>136.8</b>	
<i>10 drop av.</i>	16.3	-0.9	0.5	3.3	133.8	
Measured value	CFW %	FD $\mu$ m	CV %	FCF %	WT kg	SC mm
	<b>93.7</b>	<b>19.3</b>	<b>20.7</b>	<b>98.9</b>	<b>78.0</b>	<b>37</b>
Comment:						
Reserve price: \$900					\$	

<b>Pen 3</b>	<b>Large Tag/Rank: 126</b>		Small tag: 10-2147		<b>Horn/Twin</b>	
Trait	CFW %	FD $\mu$ m	CV %	WT kg	GRASS DP4% index	
<b>ASBVs</b>	<b>16.4</b>	<b>-0.4</b>	<b>0.9</b>	<b>4.4</b>	<b>134.3</b>	
<i>10 drop av.</i>	16.3	-0.9	0.5	3.3	133.8	
Measured value	CFW %	FD $\mu$ m	CV %	FCF %	WT kg	SC mm
	<b>96.0</b>	<b>20.5</b>	<b>19.3</b>	<b>99.1</b>	<b>77.5</b>	<b>34</b>
Comment:						
Reserve price: \$900					\$	

<b>Pen 4</b>	<b>Large Tag/Rank: 64</b>		Small tag: 10-2097		<b>Horn/Twin</b>	
Trait	CFW %	FD $\mu$ m	CV %	WT kg	GRASS DP4% index	
<b>ASBVs</b>	<b>14.2</b>	<b>-2.0</b>	<b>1.8</b>	<b>4.4</b>	<b>140.4</b>	
<i>10 drop av.</i>	16.3	-0.9	0.5	3.3	133.8	
Measured value	CFW %	FD $\mu$ m	CV %	FCF %	WT kg	SC mm
	<b>96.0</b>	<b>16.9</b>	<b>19.0</b>	<b>99.9</b>	<b>78.5</b>	<b>38</b>
Comment:						
Reserve price: \$900					\$	

**GRASS 2010 drop auction sale rams - ASBV and measured performance**

<b>Pen 5</b>	<b>Large Tag/Rank: 81</b>		Small tag: 10-2054		<b>Horn/Single</b>	
Trait	CFW %	FD $\mu$ m	CV %	WT kg	GRASS DP4% index	
<b>ASBVs</b>	<b>15.4</b>	<b>-1.1</b>	<b>0.5</b>	<b>6.3</b>	<b>138.8</b>	
<i>10 drop av.</i>	16.3	-0.9	0.5	3.3	133.8	
Measured value	CFW %	FD $\mu$ m	CV %	FCF %	WT kg	SC mm
	<b>121.8</b>	<b>18.4</b>	<b>16.9</b>	<b>99.9</b>	<b>82.5</b>	<b>32</b>
Comment:						
Reserve price: \$900					\$	

<b>Pen 6</b>	<b>Large Tag/Rank: 37</b>		Small tag: 10-2074		<b>Horn/Twin</b>	
Trait	CFW %	FD $\mu$ m	CV %	WT kg	GRASS DP4% index	
<b>ASBVs</b>	<b>23.4</b>	<b>-0.4</b>	<b>0.7</b>	<b>5.9</b>	<b>144.3</b>	
<i>10 drop av.</i>	16.3	-0.9	0.5	3.3	133.8	
Measured value	CFW %	FD $\mu$ m	CV %	FCF %	WT kg	SC mm
	<b>107.2</b>	<b>20.1</b>	<b>17.6</b>	<b>99.5</b>	<b>68.5</b>	<b>33</b>
Comment:						
Reserve price: \$900					\$	

<b>Pen 7</b>	<b>Large Tag/Rank: 50</b>		Small tag: 10-2129		<b>Horn/Single</b>	
Trait	CFW %	FD $\mu$ m	CV %	WT kg	GRASS DP4% index	
<b>ASBVs</b>	<b>24.5</b>	<b>-0.5</b>	<b>1.4</b>	<b>3.1</b>	<b>142.0</b>	
<i>10 drop av.</i>	16.3	-0.9	0.5	3.3	133.8	
Measured value	CFW %	FD $\mu$ m	CV %	FCF %	WT kg	SC mm
	<b>135.4</b>	<b>20.2</b>	<b>20.2</b>	<b>98.3</b>	<b>74.0</b>	<b>36</b>
Comment:						
Reserve price: \$900					\$	

<b>Pen 8</b>	<b>Large Tag/Rank: 47</b>		Small tag: 10-2080		<b>Horn/Twin</b>	
Trait	CFW %	FD $\mu$ m	CV %	WT kg	GRASS DP4% index	
<b>ASBVs</b>	<b>21.6</b>	<b>-0.6</b>	<b>0.2</b>	<b>4.5</b>	<b>142.3</b>	
<i>10 drop av.</i>	16.3	-0.9	0.5	3.3	133.8	
Measured value	CFW %	FD $\mu$ m	CV %	FCF %	WT kg	SC mm
	<b>92.7</b>	<b>20.0</b>	<b>16.6</b>	<b>99.7</b>	<b>66.5</b>	<b>35</b>
Comment:						
Reserve price: \$900					\$	

**GRASS 2010 drop auction sale rams - ASBV and measured performance**

<b>Pen 9</b>	<b>Large Tag/Rank: 71</b>		Small tag: 10-1819		<b>Horn/*</b>	
Trait	CFW %	FD $\mu$ m	CV %	WT kg	GRASS DP4% index	
<b>ASBVs</b>	<b>16.2</b>	<b>-1.5</b>	<b>0.8</b>	<b>4.6</b>	<b>139.5</b>	
<i>10 drop av.</i>	16.3	-0.9	0.5	3.3	133.8	
Measured value	CFW %	FD $\mu$ m	CV %	FCF %	WT kg	SC mm
	<b>107.9</b>	<b>18.1</b>	<b>18.7</b>	<b>99.9</b>	<b>75.0</b>	<b>36</b>
Comment:						
Reserve price: \$900					\$	

<b>Pen 10</b>	<b>Large Tag/Rank: 79</b>		Small tag: 10-2008		<b>Horn/*</b>	
Trait	CFW %	FD $\mu$ m	CV %	WT kg	GRASS DP4% index	
<b>ASBVs</b>	<b>15.5</b>	<b>-1.8</b>	<b>0.6</b>	<b>4.3</b>	<b>139.0</b>	
<i>10 drop av.</i>	16.3	-0.9	0.5	3.3	133.8	
Measured value	CFW %	FD $\mu$ m	CV %	FCF %	WT kg	SC mm
	<b>111.3</b>	<b>17.3</b>	<b>17.6</b>	<b>99.8</b>	<b>78.0</b>	<b>35</b>
Comment:						
Reserve price: \$900					\$	

<b>Pen 11</b>	<b>Large Tag/Rank: 93</b>		Small tag: 10-2191		<b>Poll/Single</b>	
Trait	CFW %	FD $\mu$ m	CV %	WT kg	GRASS DP4% index	
<b>ASBVs</b>	<b>17.6</b>	<b>-1.2</b>	<b>0.0</b>	<b>3.9</b>	<b>137.0</b>	
<i>10 drop av.</i>	16.3	-0.9	0.5	3.3	133.8	
Measured value	CFW %	FD $\mu$ m	CV %	FCF %	WT kg	SC mm
	<b>114.2</b>	<b>19.0</b>	<b>16.7</b>	<b>99.8</b>	<b>74.5</b>	<b>36</b>
Comment:						
Reserve price: \$900					\$	

<b>Pen 12</b>	<b>Large Tag/Rank: 72</b>		Small tag: 10-2111		<b>Poll/Twin</b>	
Trait	CFW %	FD $\mu$ m	CV %	WT kg	GRASS DP4% index	
<b>ASBVs</b>	<b>19.7</b>	<b>0.0</b>	<b>-1.3</b>	<b>6.1</b>	<b>139.3</b>	
<i>10 drop av.</i>	16.3	-0.9	0.5	3.3	133.8	
Measured value	CFW %	FD $\mu$ m	CV %	FCF %	WT kg	SC mm
	<b>98.6</b>	<b>19.8</b>	<b>15.0</b>	<b>99.8</b>	<b>79.0</b>	<b>35</b>
Comment:						
Reserve price: \$900					\$	

**GRASS 2010 drop auction sale rams - ASBV and measured performance**

<b>Pen 13</b>	<b>Large Tag/Rank: 153</b>		Small tag: 10-2106		<b>Poll/Twin</b>	
Trait	CFW %	FD $\mu$ m	CV %	WT kg	GRASS DP4% index	
ASBVs	<b>16.9</b>	<b>0.2</b>	<b>0.2</b>	<b>5.9</b>	<b>132.8</b>	
<i>10 drop av.</i>	16.3	-0.9	0.5	3.3	133.8	
Measured value	CFW %	FD $\mu$ m	CV %	FCF %	WT kg	SC mm
	<b>91.8</b>	<b>20.4</b>	<b>18.7</b>	<b>98.9</b>	<b>73.0</b>	<b>34</b>
Comment:						
Reserve price: \$900					\$	

<b>Pen 14</b>	<b>Large Tag/Rank: 130</b>		Small tag: 10-2110		<b>Poll/Twin</b>	
Trait	CFW %	FD $\mu$ m	CV %	WT kg	GRASS DP4% index	
ASBVs	<b>16.2</b>	<b>-0.7</b>	<b>-0.7</b>	<b>4.3</b>	<b>134.3</b>	
<i>10 drop av.</i>	16.3	-0.9	0.5	3.3	133.8	
Measured value	CFW %	FD $\mu$ m	CV %	FCF %	WT kg	SC mm
	<b>102.4</b>	<b>19.2</b>	<b>16.6</b>	<b>99.8</b>	<b>72.0</b>	<b>33</b>
Comment:						
Reserve price: \$900					\$	

<b>Pen 15</b>	<b>Large Tag/Rank: 117</b>		Small tag: 10-1793		<b>Poll/*</b>	
Trait	CFW %	FD $\mu$ m	CV %	WT kg	GRASS DP4% index	
ASBVs	<b>14.3</b>	<b>-0.7</b>	<b>-0.3</b>	<b>6.0</b>	<b>134.9</b>	
<i>10 drop av.</i>	16.3	-0.9	0.5	3.3	133.8	
Measured value	CFW %	FD $\mu$ m	CV %	FCF %	WT kg	SC mm
	<b>106.0</b>	<b>19.4</b>	<b>16.4</b>	<b>99.9</b>	<b>78.0</b>	<b>35</b>
Comment:						
Reserve price: \$900					\$	

<b>Pen 16</b>	<b>Large Tag/Rank: 128</b>		Small tag: 10-2195		<b>Poll/Twin</b>	
Trait	CFW %	FD $\mu$ m	CV %	WT kg	GRASS DP4% index	
ASBVs	<b>11.6</b>	<b>-1.4</b>	<b>-0.1</b>	<b>5.5</b>	<b>134.3</b>	
<i>10 drop av.</i>	16.3	-0.9	0.5	3.3	133.8	
Measured value	CFW %	FD $\mu$ m	CV %	FCF %	WT kg	SC mm
	<b>92.7</b>	<b>18.0</b>	<b>15.4</b>	<b>100.0</b>	<b>76.5</b>	<b>34</b>
Comment:						
Reserve price: \$900					\$	

**GRASS 2010 drop auction sale rams - ASBV and measured performance**

<b>Pen 17</b>		<b>Large Tag/Rank: 150</b>		Small tag: 10-2182		<b>Poll/Twin</b>	
Trait	CFW %	FD $\mu$ m	CV %	WT kg	GRASS DP4% index		
ASBVs	<b>16.5</b>	<b>-1.1</b>	<b>-0.2</b>	<b>3.5</b>	<b>133.3</b>		
<i>10 drop av.</i>	16.3	-0.9	0.5	3.3	133.8		
Measured value	CFW %	FD $\mu$ m	CV %	FCF %	WT kg	SC mm	
	<b>106.9</b>	<b>19.2</b>	<b>17.2</b>	<b>99.7</b>	<b>69.0</b>	<b>34</b>	
Comment:							
Reserve price: \$900					\$		

<b>Pen 18</b>		<b>Large Tag/Rank: 152</b>		Small tag: 10-1987		<b>Poll/*</b>	
Trait	CFW %	FD $\mu$ m	CV %	WT kg	GRASS DP4% index		
ASBVs	<b>17.9</b>	<b>-0.2</b>	<b>0.1</b>	<b>4.5</b>	<b>133.2</b>		
<i>10 drop av.</i>	16.3	-0.9	0.5	3.3	133.8		
Measured value	CFW %	FD $\mu$ m	CV %	FCF %	WT kg	SC mm	
	<b>116.3</b>	<b>20.5</b>	<b>16.7</b>	<b>99.7</b>	<b>74.0</b>	<b>35</b>	
Comment:							
Reserve price: \$900					\$		

<b>Pen 19</b>		<b>Large Tag/Rank: 28</b>		Small tag: 10-2187		<b>Poll/Twin</b>	
Trait	CFW %	FD $\mu$ m	CV %	WT kg	GRASS DP4% index		
ASBVs	<b>22.9</b>	<b>-1.0</b>	<b>-0.3</b>	<b>4.6</b>	<b>144.9</b>		
<i>10 drop av.</i>	16.3	-0.9	0.5	3.3	133.8		
Measured value	CFW %	FD $\mu$ m	CV %	FCF %	WT kg	SC mm	
	<b>122.3</b>	<b>19.5</b>	<b>15.5</b>	<b>99.9</b>	<b>71.0</b>	<b>34</b>	
Comment:							
Reserve price: \$900					\$		

<b>Pen 20</b>		<b>Large Tag/Rank: 69</b>		Small tag: 10-2103		<b>Poll/Twin</b>	
Trait	CFW %	FD $\mu$ m	CV %	WT kg	GRASS DP4% index		
ASBVs	<b>21.5</b>	<b>0.3</b>	<b>-1.0</b>	<b>5.6</b>	<b>139.7</b>		
<i>10 drop av.</i>	16.3	-0.9	0.5	3.3	133.8		
Measured value	CFW %	FD $\mu$ m	CV %	FCF %	WT kg	SC mm	
	<b>107.1</b>	<b>20.6</b>	<b>15.1</b>	<b>99.8</b>	<b>75.5</b>	<b>35</b>	
Comment:							
Reserve price: \$900					\$		

**GRASS 2010 drop auction sale rams - ASBV and measured performance**

<b>Pen 21</b>	<b>Large Tag/Rank: 2</b>		Small tag: 10-2064		<b>Horn/Twin</b>	
Trait	CFW %	FD $\mu$ m	CV %	WT kg	GRASS DP4% index	
ASBVs	<b>29.9</b>	<b>-1.4</b>	<b>3.3</b>	<b>3.9</b>	<b>157.2</b>	
<i>10 drop av.</i>	16.3	-0.9	0.5	3.3	133.8	
Measured value	CFW %	FD $\mu$ m	CV %	FCF %	WT kg	SC mm
	<b>125.4</b>	<b>18.5</b>	<b>22.8</b>	<b>98.9</b>	<b>72.0</b>	<b>31</b>
Comment:						
Reserve price: \$900					\$	

<b>Pen 22</b>	<b>Large Tag/Rank: 6</b>		Small tag: 10-2085		<b>Horn/Twin</b>	
Trait	CFW %	FD $\mu$ m	CV %	WT kg	GRASS DP4% index	
ASBVs	<b>27.2</b>	<b>-1.3</b>	<b>2.4</b>	<b>4.4</b>	<b>152.6</b>	
<i>10 drop av.</i>	16.3	-0.9	0.5	3.3	133.8	
Measured value	CFW %	FD $\mu$ m	CV %	FCF %	WT kg	SC mm
	<b>118.4</b>	<b>18.8</b>	<b>22.5</b>	<b>98.6</b>	<b>73.0</b>	<b>35</b>
Comment:						
Reserve price: \$900					\$	

<b>Pen 23</b>	<b>Large Tag/Rank: 122</b>		Small tag: 10-1945		<b>Horn/*</b>	
Trait	CFW %	FD $\mu$ m	CV %	WT kg	GRASS DP4% index	
ASBVs	<b>18.6</b>	<b>-0.7</b>	<b>0.1</b>	<b>2.9</b>	<b>134.6</b>	
<i>10 drop av.</i>	16.3	-0.9	0.5	3.3	133.8	
Measured value	CFW %	FD $\mu$ m	CV %	FCF %	WT kg	SC mm
	<b>112.7</b>	<b>19.5</b>	<b>16.0</b>	<b>99.9</b>	<b>72.5</b>	<b>31</b>
Comment:						
Reserve price: \$900					\$	

<b>Pen 24</b>	<b>Large Tag/Rank: 43</b>		Small tag: 10-2068		<b>Horn/Twin</b>	
Trait	CFW %	FD $\mu$ m	CV %	WT kg	GRASS DP4% index	
ASBVs	<b>24.2</b>	<b>-1.3</b>	<b>1.6</b>	<b>2.1</b>	<b>143.0</b>	
<i>10 drop av.</i>	16.3	-0.9	0.5	3.3	133.8	
Measured value	CFW %	FD $\mu$ m	CV %	FCF %	WT kg	SC mm
	<b>106.4</b>	<b>17.6</b>	<b>19.9</b>	<b>99.6</b>	<b>64.0</b>	<b>34</b>
Comment:						
Reserve price: \$900					\$	

**GRASS 2010 drop auction sale rams - ASBV and measured performance**

<b>Pen 25</b>		<b>Large Tag/Rank: 106</b>		Small tag: 10-2135		<b>Horn/Twin</b>	
Trait	CFW %	FD $\mu$ m	CV %	WT kg	GRASS DP4% index		
ASBVs	<b>11.5</b>	<b>-1.7</b>	<b>-0.1</b>	<b>5.4</b>	<b>136.0</b>		
10 drop av.	16.3	-0.9	0.5	3.3	133.8		
Measured value	<b>102.8</b>	<b>17.7</b>	<b>16.3</b>	<b>100.0</b>	<b>78.0</b>	<b>36</b>	
Comment:							
Reserve price: \$900						\$	

<b>Pen 26</b>		<b>Large Tag/Rank: 89</b>		Small tag: 10-2062		<b>Horn/Twin</b>	
Trait	CFW %	FD $\mu$ m	CV %	WT kg	GRASS DP4% index		
ASBVs	<b>16.1</b>	<b>-1.5</b>	<b>0.6</b>	<b>4.3</b>	<b>137.5</b>		
10 drop av.	16.3	-0.9	0.5	3.3	133.8		
Measured value	<b>115.4</b>	<b>18.1</b>	<b>17.4</b>	<b>100.0</b>	<b>77.0</b>	<b>36</b>	
Comment:							
Reserve price: \$900						\$	

<b>Pen 27</b>		<b>Large Tag/Rank: 125</b>		Small tag: 10-1786		<b>Horn/*</b>	
Trait	CFW %	FD $\mu$ m	CV %	WT kg	GRASS DP4% index		
ASBVs	<b>15.5</b>	<b>-0.4</b>	<b>-0.6</b>	<b>5.4</b>	<b>134.5</b>		
10 drop av.	16.3	-0.9	0.5	3.3	133.8		
Measured value	<b>102.9</b>	<b>20.1</b>	<b>14.9</b>	<b>99.8</b>	<b>82.5</b>	<b>33</b>	
Comment:							
Reserve price: \$900						\$	

<b>Pen 28</b>		<b>Large Tag/Rank: 154</b>		Small tag: 10-1804		<b>Horn/*</b>	
Trait	CFW %	FD $\mu$ m	CV %	WT kg	GRASS DP4% index		
ASBVs	<b>14.1</b>	<b>-0.7</b>	<b>0.0</b>	<b>4.8</b>	<b>132.7</b>		
10 drop av.	16.3	-0.9	0.5	3.3	133.8		
Measured value	<b>95.3</b>	<b>19.6</b>	<b>16.9</b>	<b>99.5</b>	<b>81.0</b>	<b>35</b>	
Comment:							
Reserve price: \$900						\$	

**GRASS 2010 drop auction sale rams - ASBV and measured performance**

<b>Pen 29</b>	<b>Large Tag/Rank: 73</b>		Small tag: 10-2050		<b>Horn/Twin</b>	
Trait	CFW %	FD $\mu$ m	CV %	WT kg	GRASS DP4% index	
ASBVs	<b>13.1</b>	<b>-1.0</b>	<b>0.4</b>	<b>7.8</b>	<b>139.3</b>	
<i>10 drop av.</i>	16.3	-0.9	0.5	3.3	133.8	
Measured value	<b>85.4</b>	<b>18.3</b>	<b>17.0</b>	<b>99.9</b>	<b>80.5</b>	<b>35</b>
Comment:						
Reserve price: \$900					\$	

<b>Pen 30</b>	<b>Large Tag/Rank: 30</b>		Small tag: 10-2096		<b>Horn/Twin</b>	
Trait	CFW %	FD $\mu$ m	CV %	WT kg	GRASS DP4% index	
ASBVs	<b>22.8</b>	<b>-0.3</b>	<b>-0.1</b>	<b>6.1</b>	<b>144.9</b>	
<i>10 drop av.</i>	16.3	-0.9	0.5	3.3	133.8	
Measured value	<b>107.2</b>	<b>20.4</b>	<b>16.4</b>	<b>99.4</b>	<b>77.0</b>	<b>37</b>
Comment:						
Reserve price: \$900					\$	

**Notes:** \_\_\_\_\_

\_\_\_\_\_

\_\_\_\_\_

\_\_\_\_\_

\_\_\_\_\_

\_\_\_\_\_

\_\_\_\_\_

\_\_\_\_\_

\_\_\_\_\_

\_\_\_\_\_

# Dubbo Veterinary Hospital

## Veterinary Surgeons

MI1 Carter BVSc  
GP McCann BVSc  
J Nordaker BVSc  
NF Channon BVSc (Hons)  
S Wai-Shing BVSc (Hons)



ABN 93 646 063 614

355 Macquarie Street

Dubbo NSW 2830

Phone: (02) 6884 1190

Fax: (02) 6882 8108

Email: dubbovet@mabdveter.com.au

Mr. Graham Peart  
P.O. Box 2104  
Dubbo NSW 2830

## VETERINARY REPORT ON GRASS MERINO TWO TOOTH SALE RAMS.

On July 26<sup>th</sup> 2011 the following examinations were carried out on the two-tooth sale rams at "Sunnyside", Armatree.

- Soundness of eyes
- Soundness of feet and joints
- Condition score
- Measurements of Scrotal Circumference
- Palpation of testicles and scrotal contents
- Soundness of mouth
- Soundness of prepuce

The rams were in store body condition (score 3-4), with good to excellent testicular tone and resilience.

GRASS MERINOS are Brucellosis Accredited Free,  
Certificate No. W84/25, expiry November 30<sup>th</sup>, 2011.

GRASS MERINOS have not been known to have had VIRULENT OVINE FOOTROT  
or OVINE JOHNES DISEASE.

The property "Sunnyside" is situated in the Coonamble Area of the Central West  
Livestock Health and Pest Authority which is:

- a) A protected area for VIRULENT OVINE FOOTROT.
- b) Very Low Prevalence for OVINE JOHNES DISEASE.
- c) An Exclusion Area for OVINE JOHNES DISEASE.
- d) Has 4 ABC points for OVINE JOHNES DISEASE.

*Mark H. Carter BVSc 1624*  
Mark H. Carter BVSc  
August 9<sup>th</sup> 2011



# JEMALONG WOOL

*Service ~ Information ~ Marketing*

Offering Wooltrade™ to the eastern states since 2001

**Forbes 6851 4000      Tamworth 6762 8200**

**Cooma 6452 3130**

<b>Rowan Woods</b>	<b>0428 638 561</b>
<b>David Quirk</b>	<b>0428 749 878</b>
<b>Steve Quirk</b>	<b>0427 466 450</b>
<b>Darryl Gosper</b>	<b>0419 915 690</b>
<b>Maxine Blyton</b>	<b>0418 484 733</b>
<b>Kylie Clifford</b>	<b>0428 660 509</b>
<b>Tim Drury</b>	<b>0427 311 733</b>



JEMALONG WOOL

[www.jemalongwool.com.au](http://www.jemalongwool.com.au)



# RMS ACCOUNTANTS

*Stephen Malcolm*  
C.P.A. – PARTNER

*Randal Porter*  
C.P.A. – PARTNER

## Rural Business Advisors

### DUBBO

107 Wingewarra Street  
PO Box 2430, Dubbo NSW 2830  
Tel: 02 **6884 5544** Fax: 02 6884 5542  
Email: [admin@rmsaccountants.com.au](mailto:admin@rmsaccountants.com.au)

### Rural Management Services

- Accounting & Taxation
- Farm Analysis
- Financial Planning
- Succession Planning
- Bank Finance & Negotiation

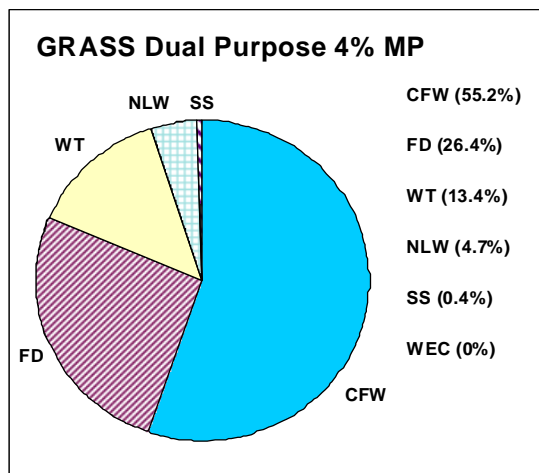
*Specialising in Agricultural Issues*



# The GRASS Dual Purpose 4% Micron Premium Selection Index

A selection index combines the measurements of a sheep into a single value that represents the sheep's overall performance for measured traits.

The GRASS index aims to identify the rams that best fit the GRASS breeding objective. The traits in the index are clean fleece weight (CFW), fibre diameter (FD), staple strength (SS) body weight (WT) and number of lambs weaned (NLW).



By combining each of these measured traits the most profitable rams for wool production, meat production and fertility are identified.

The pie graph describes the GRASS index. The graph shows the percentage of contribution of each of the traits to future economic gain as a result of the genetic gain made by using the GRASS index in a GRASS blood commercial flock.

An average GRASS 2010 drop index value is 133.8. The higher the index

value of the ram the higher the ram's performance relative to the GRASS breeding objective.

Flock fertility and lambing percentage has increased over 30 years of selecting rams on testicle size and ewes by culling dry maidens and lambed and lost maidens. 100% lambings are now common in GRASS flocks.

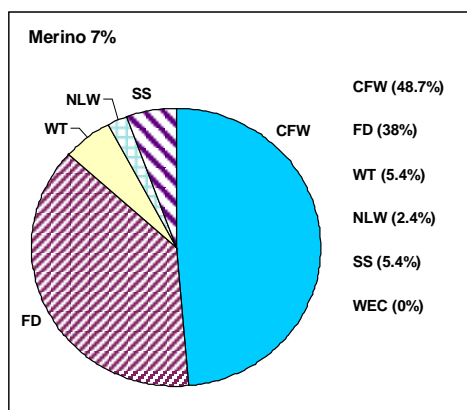
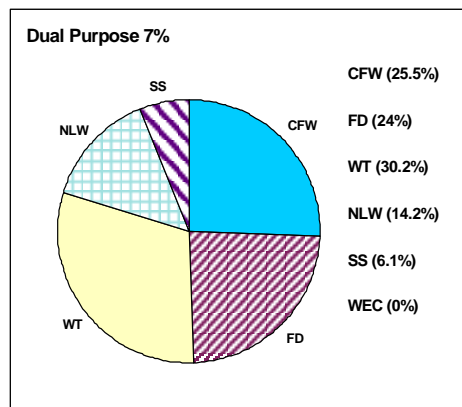
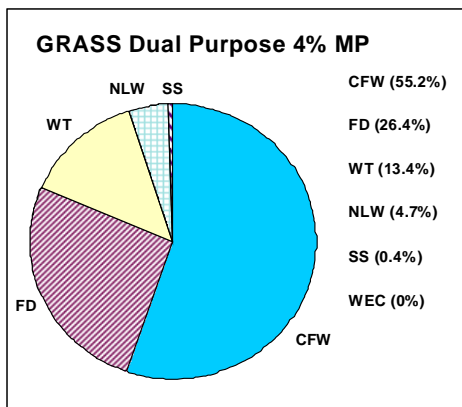
### Index options

An index value combines the performance for several traits into one number that reflects a breeding objective. The index value provides you with a summary of a sheep's performance and accounts for different emphasis on traits that make up the index value.

The following graphs describe the three indexes available to auction ram buyers. The graphs describe the percentage contribution of each of the traits to economic gain that is as a result of the genetic gain made by using the index (in a GRASS blood commercial flock – as described in table on the bottom of page 6).

The ram sale pen cards have three indexes reported that provide a wide range in emphasis on traits.

- (i) GRASS Dual Purpose 4% MP,
- (ii) Dual Purpose 7% MP
- (iii) Merino 7% MP.



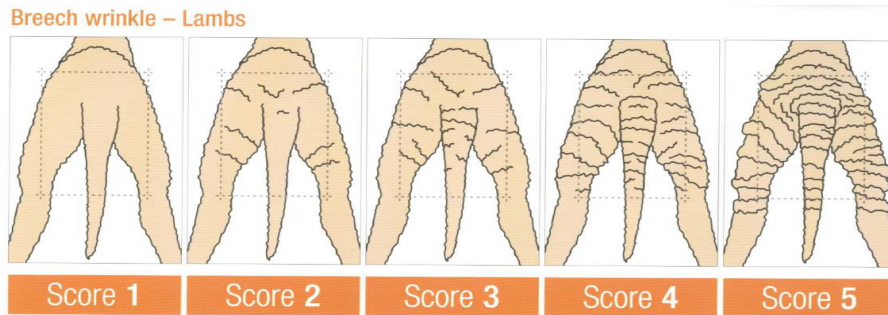
# Wrinkle Score

Wrinkle Score is the trait that best defines the susceptibility of sheep to become flystruck in the breech area when dag is not present. GRASS Merinos continues to breed wrinkle score all lambs at marking to reduce the susceptibility of GRASS bred sheep.

## Industry Wrinkle Score System

**1 = No wrinkle**

**5 = Very wrinkled**



**The 2010 drop GRASS Results were:**

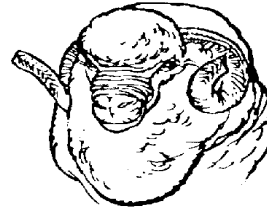
Wrinkle score	1 No wrinkle	2	3	4	5 Wrinkled
2008 %	64	31	4	1	0
2009 %	19	48	29	4	0
2010 %	21	54	22	3	0

Score 4 and 5 score lambs will be culled and continued pressure applied to select highly productive plainer sheep.

# DIRECTIONS

The “Sunnyside” woolshed is 35km north of Gilgandra on the Castlereagh Highway (to Gulargambone) on the left hand side (and 5km south of the Armatree, Castlereagh River bridge RHSO. Watch for signs.





## CONTACTS

### Website

[www.GRASSmerino.com.au](http://www.GRASSmerino.com.au)

### Business Manager

Graham Peart

PO Box 2104, DUBBO NSW 2830

Ph: (w) 6884 5544 (h) 6882 5721

(m) 0428 825 721

Email: [gpeart@rmsaccountants.com.au](mailto:gpeart@rmsaccountants.com.au)

### Stud Managers

Greg and Di Peart

"Wongalee", GILANDRA NSW 2827

Ph: (w) 6848 5885 (m) 0429 485 885

Email: [dgpeart@bigpond.com](mailto:dgpeart@bigpond.com)

### Stud Classer

Allan Casey

Ph: (m) 0408 279 719